

7006


Педагогический
репертуар

Детская музыкальная школа

Ю. Конюс
УПРАЖНЕНИЯ
И
МАЛЕНЬКИЕ
ЭТЮДЫ

В ДВОЙНЫХ НОТАХ

ДЛЯ СКРИПКИ

W

УПРАЖНЕНИЯ И МАЛЕНЬКИЕ ЭТЮДЫ

В ДВОЙНЫХ НОТАХ

Ю. КОНЮС
(1869—1942)

Если рука ученика еще мала, то нужно пропускать те упражнения, которые требуют большого растяжения пальцев и тем вызывают судорожное состояние руки, в противном случае, вместо пользы, занятия могут принести большой вред, расслабляя мускулы руки.

Двойные ноты с пустой струной

Так же упражняться в Ре мажоре и ре миноре на струнах ре и ля, в Ля мажоре и ля миноре на струнах ля и ми. Пользоваться следующими образцами (то же в мажоре и миноре на струнах ре-ля и ля-ми).

1.

УПРАЖНЕНИЯ

2.



3.



4



5



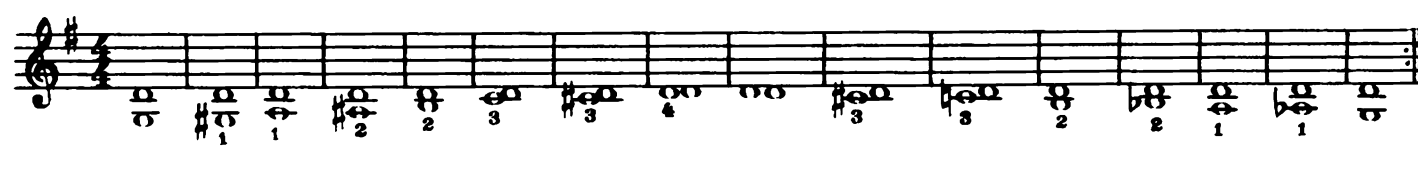
6.



7

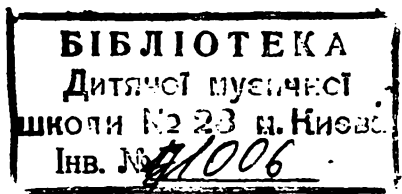


8



Так же упражняйтесь и на других струнах.

13331



1.

2.

Fine

1 вар.

2 вар.

и т. д.

simile

Fine

у колодки

3.

1 вар.

2 вар.

3 вар.

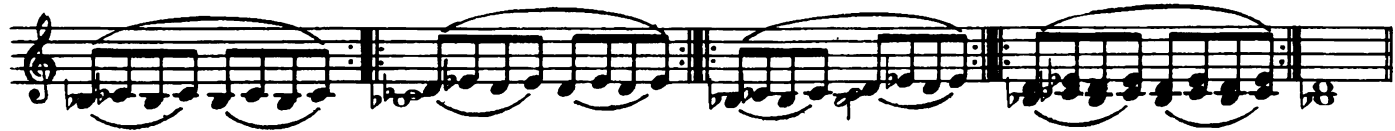
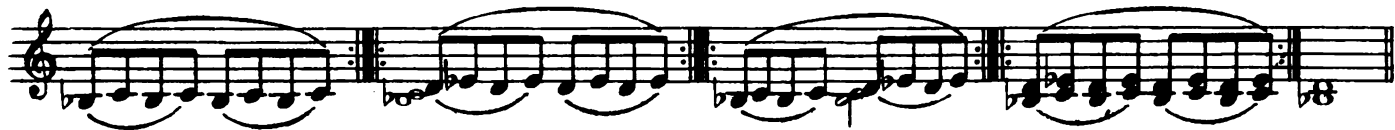
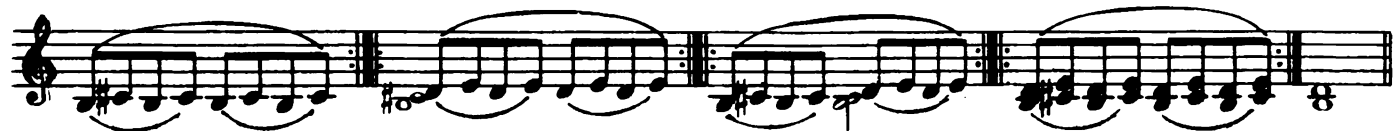
4 вар.

5 вар.

Терции

This musical score, titled "Терции" (Triads), consists of 12 staves of music. Each staff begins with a treble clef and a key signature of one sharp (F#). The music is organized into four systems, each containing three staves. The first staff of each system contains a sequence of eighth notes, with some notes beamed together. The second and third staves of each system contain chords, primarily triads, which are often beamed together. The score includes various musical notations such as accidentals (sharps and flats), slurs, and repeat signs with first and second endings. The overall structure is a systematic exploration of triads across different keys and inversions.

This page of musical notation is organized into 12 horizontal staves. The first three staves (1-3) consist of chord diagrams, where each staff shows a sequence of chords with their constituent notes and accidentals. The remaining nine staves (4-12) contain melodic lines. These lines feature a variety of musical notations, including eighth and sixteenth notes, rests, and accidentals (sharps, flats, naturals). Some staves include dynamic markings such as '2' and '0', and articulation marks like slurs and accents. The notation is presented in a clear, black-and-white format on a white background.



* Пальцы оставлять на месте

и т. д. на струнах соль и ре

На струнах ре и ля

На струнах ля и ми

ЭТЮДЫ

Cantabile

Сексты

Так же упражняться и далее:

после́дний такт

после́дний такт

после́дний такт

после́дний такт

после́дний такт

Так же и на других струнах:

* 1-й палец остается на месте

Four staves of musical notation for guitar. Each staff contains a sequence of rhythmic patterns, primarily consisting of eighth and sixteenth notes, often grouped with slurs and ties. The patterns are repeated across the staves, with some variations in phrasing and articulation. The notation includes various accidentals and dynamic markings.

Так же и на других струнах:

Six staves of musical notation for guitar, illustrating rhythmic patterns for other strings. The notation is similar to the first section, featuring eighth and sixteenth notes with slurs and ties. The patterns are repeated across the staves, with some variations in phrasing and articulation. The notation includes various accidentals and dynamic markings. The last two staves end with the text "и т. д." (and so on).

и т. д. и т. д.

и т. д. и т. д.

и т. д. и т. д.

Так же и на других струнах:

и т. д.

6.

The main musical score for exercise 6 consists of ten staves of music. It is written in G major (one sharp) and 2/4 time. The piece begins with a treble clef and a common time signature. The first staff starts with a treble clef, a key signature of one sharp (F#), and a common time signature. The music features a series of eighth and sixteenth notes, often beamed together, with various ornaments (v) and slurs throughout. The melody is intricate, with many accidentals and dynamic markings. The piece concludes with a double bar line.

ВАРИАНТЫ:

1.

Variant 1 is a short musical phrase consisting of a single staff of music. It begins with a treble clef and a key signature of one sharp (F#). The notation shows a sequence of notes with various ornaments (v) and slurs. The phrase ends with a double bar line.

у колодки

2.

Variant 2 is a short musical phrase consisting of a single staff of music. It begins with a treble clef and a key signature of one sharp (F#). The notation shows a sequence of notes with various ornaments (v) and slurs. The phrase ends with a double bar line.

у конца

7.

ВАРИАНТ:

и т. д. до 12-го такта

12-й, 13-й, 14-й и 15-й такты изменятся так:

и т. д.

Октавы

The first four staves of music show exercises for the guitar. Each staff begins with a melodic line in the treble clef, followed by a double bar line and then a series of chords or pairs of notes in the bass clef, often circled to indicate octaves. The exercises are in different keys: the first is in C major, the second in D major, the third in E major, and the fourth in F major. Each exercise includes repeat signs and ends with a final chord.

Так же и на других струнах:

A single staff of music showing a specific exercise for guitar, consisting of a sequence of notes and chords in the treble clef.

The fifth and sixth staves of music show further exercises for the guitar. Similar to the first four staves, they feature melodic lines in the treble clef and corresponding bass clef chords or pairs of notes, often circled to indicate octaves. The exercises are in different keys: the fifth is in G major and the sixth is in A major. Each exercise includes repeat signs and ends with a final chord.

То же и на других струнах:

A single staff of music showing a specific exercise for guitar, consisting of a sequence of notes and chords in the treble clef.

The seventh and eighth staves of music show further exercises for the guitar. The seventh staff is in D major and the eighth is in E major. Each exercise includes repeat signs and ends with a final chord.

1. 2.



Так же учить и следующее упражнение

1. 2.



Смешанные интервалы



ГАММЫ ДВОЙНЫМИ НОТАМИ

G-dur



As-dur



A-dur



B-dur



H-dur



БИБЛИОТЕКА
Детской музыкальной
школы № 23 п. Ново-
Инв. № 1006

Des-dur

D-dur

Es-dur

E-dur

F-dur

Fis-dur

g-moll

as-moll

a-moll

b-moll

Handwritten musical notation for the B-flat major scale (b-moll). The scale is written on a single staff in treble clef, starting on B-flat. It consists of 12 notes: B-flat, C, D, E-flat, F, G, A-flat, B-flat, C, D, E-flat, F. The notation includes stems, beams, and accidentals (flats) for the B and E notes. The piece concludes with a double bar line and repeat dots.

h-moll

Handwritten musical notation for the B major scale (h-moll). The scale is written on a single staff in treble clef, starting on B. It consists of 12 notes: B, C, D, E, F-sharp, G, A, B, C, D, E, F-sharp. The notation includes stems, beams, and accidentals (sharps) for the F and C notes. The piece concludes with a double bar line and repeat dots.

c-moll

Handwritten musical notation for the C major scale (c-moll). The scale is written on a single staff in treble clef, starting on C. It consists of 12 notes: C, D, E, F, G, A, B, C, D, E, F, G. The notation includes stems, beams, and no accidentals. The piece concludes with a double bar line and repeat dots.

cis-moll

Handwritten musical notation for the C-sharp major scale (cis-moll). The scale is written on a single staff in treble clef, starting on C-sharp. It consists of 12 notes: C-sharp, D, E, F-sharp, G, A, B, C-sharp, D, E, F-sharp, G. The notation includes stems, beams, and accidentals (sharps) for the C and F notes. The piece concludes with a double bar line and repeat dots.

d-moll

Handwritten musical notation for the D major scale (d-moll). The scale is written on a single staff in treble clef, starting on D. It consists of 12 notes: D, E, F-sharp, G, A, B, C, D, E, F-sharp, G, A. The notation includes stems, beams, and accidentals (sharps) for the F and C notes. The piece concludes with a double bar line and repeat dots.

es-moll

Handwritten musical notation for the E-flat major scale (es-moll). The scale is written on a single staff in treble clef, starting on E-flat. It consists of 12 notes: E-flat, F, G, A, B-flat, C, D, E-flat, F, G, A, B-flat. The notation includes stems, beams, and accidentals (flats) for the B and E notes. The piece concludes with a double bar line and repeat dots.

e-moll

Handwritten musical notation for the E major scale (e-moll). The scale is written on a single staff in treble clef, starting on E. It consists of 12 notes: E, F-sharp, G, A, B, C, D, E, F-sharp, G, A, B. The notation includes stems, beams, and accidentals (sharps) for the F and C notes. The piece concludes with a double bar line and repeat dots.

f-moll

Handwritten musical notation for the F major scale (f-moll). The scale is written on a single staff in treble clef, starting on F. It consists of 12 notes: F, G, A, B-flat, C, D, E, F, G, A, B-flat, C. The notation includes stems, beams, and accidentals (flats) for the B and C notes. The piece concludes with a double bar line and repeat dots.

fis-moll

Handwritten musical notation for the F-sharp major scale (fis-moll). The scale is written on a single staff in treble clef, starting on F-sharp. It consists of 12 notes: F-sharp, G, A, B, C, D, E, F-sharp, G, A, B, C. The notation includes stems, beams, and accidentals (sharps) for the F and C notes. The piece concludes with a double bar line and repeat dots.

The first system consists of two staves of musical notation. The top staff is a treble clef with a key signature of one sharp (F#) and a 4/4 time signature. It contains a sequence of chords and single notes. The bottom staff is a bass clef with a key signature of one sharp (F#) and a 4/4 time signature, providing a harmonic accompaniment for the top staff.

G-dur

The G-dur section consists of two staves of musical notation. The top staff is a treble clef with a key signature of two sharps (F# and C#) and a 4/4 time signature. It includes fingerings such as '2' and '3'. The bottom staff is a bass clef with a key signature of two sharps (F# and C#) and a 4/4 time signature.

g-moll

The g-moll section consists of two staves of musical notation. The top staff is a treble clef with a key signature of two flats (Bb and Eb) and a 4/4 time signature. The bottom staff is a bass clef with a key signature of two flats (Bb and Eb) and a 4/4 time signature.

A-dur

The A-dur section consists of two staves of musical notation. The top staff is a treble clef with a key signature of three sharps (F#, C#, and G#) and a 4/4 time signature. The bottom staff is a bass clef with a key signature of three sharps (F#, C#, and G#) and a 4/4 time signature.

a-moll

The a-moll section consists of two staves of musical notation. The top staff is a treble clef with a key signature of three sharps (F#, C#, and G#) and a 4/4 time signature. The bottom staff is a bass clef with a key signature of three sharps (F#, C#, and G#) and a 4/4 time signature.

8.

1. ВАРИАНТЫ:

2.

3.

4. *у колочки, серединой, у конца*
martellato

5. *spiccato*

9.

10. *p*

1. ВАРИАНТЫ:

2.

3.

4.

11.

3
4

simile

2
3

ossia:

12. *ВУУ ВУУ ВУУ? ?*

1. ВАРИАНТЫ:

1. и т. д. 2. и т. д.
3. и т. д. 4. и т. д.
5. и т. д. 6. и т. д.

Largamente

13. 1. 2.
1. 2.



Москва
«Музыка»
1986

30 к.

ЮЛИИ ЭДУАРДОВИЧ КОНЮС
УПРАЖНЕНИЯ И МАЛЕНЬКНЕ ЭТЮДЫ
В ДВОЙНЫХ НОТАХ
для скрипки

Редактор В. Мурзин. Техн. редактор В. Кичоровская
Корректор С. Кузнецова

Н/К

Подписано в набор 29.04.85. Подписано в печать 6.02.86. Формат
бумаги 60×90¹/₈. Бумага картографическая. Гарнитура «Литератур-
ная». Печать офсет. Объем печ. л. 3,0. Усл. п. л. 3,0. Усл. кр.-отт. 3,25.
Уч.-изд. л. 2,76. Тираж 10 000 экз. Изд. № 13331. Зак. 5378. Цена 30 к.

Издательство «Музыка», 103031, Москва, Неглинная, 14

Московская типография № 6 Союзполиграфпрома при Государственном
комитете СССР по делам издательств, полиграфии и книжной торговли,
109088, Москва, Ж-88, Южнопортовая ул., 24