



Для начинающих

# Нотные прописи

МОСКВА  МУЗЫКА



# Нотные прописи

для начинающих

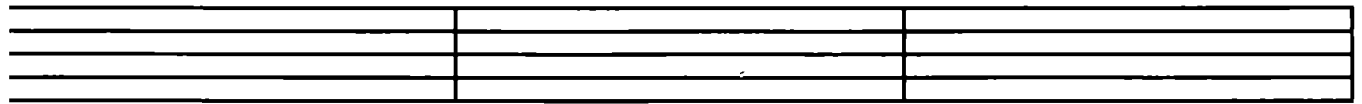
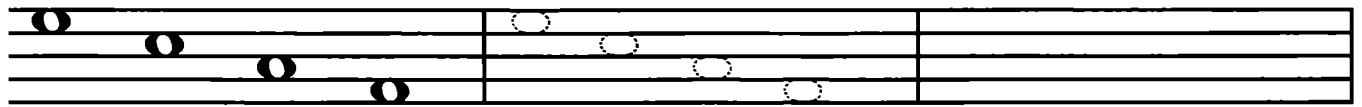
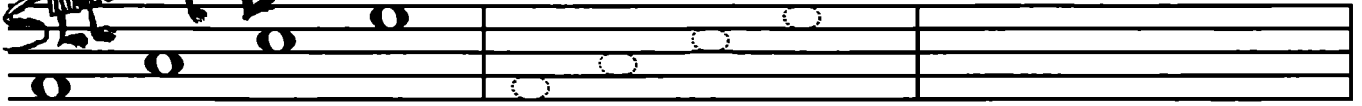
Составитель О. Абросова



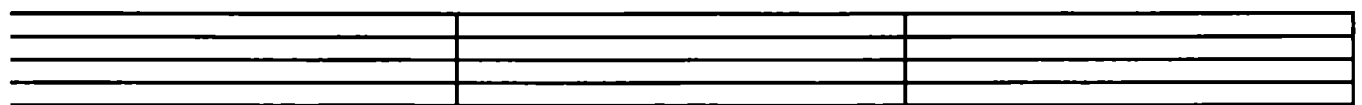
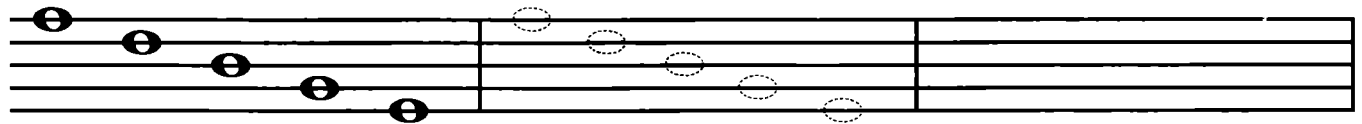
МОСКВА • МУЗЫКА

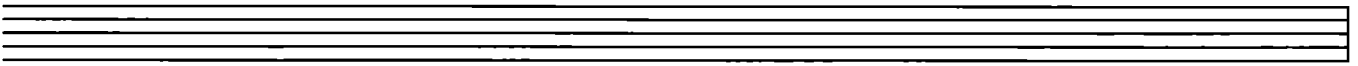
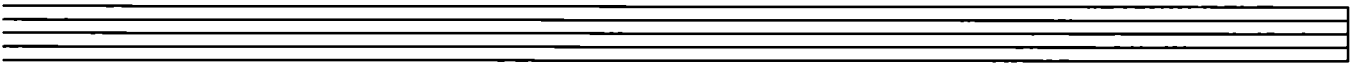
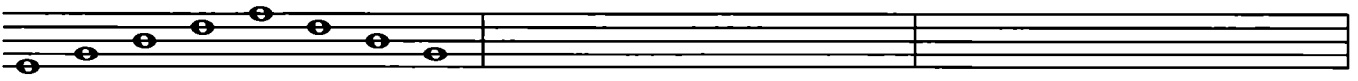
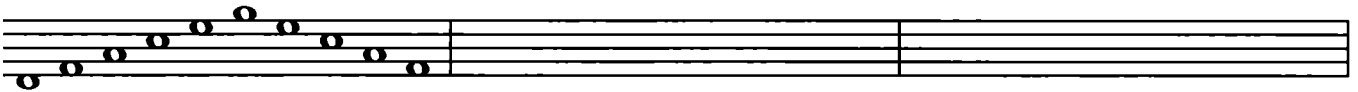
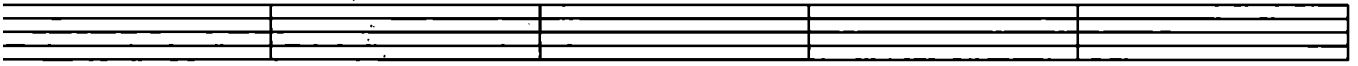
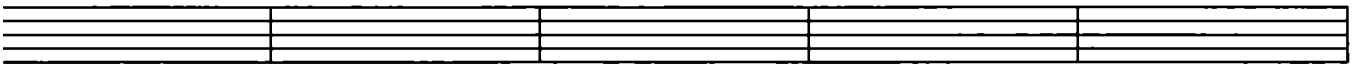
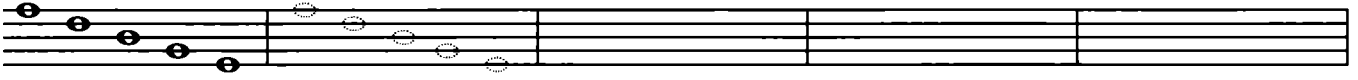
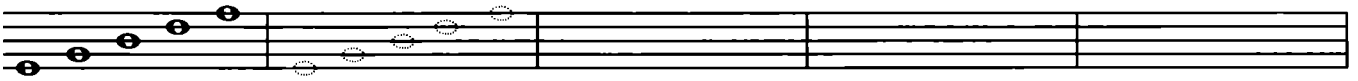
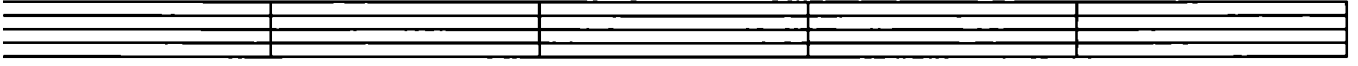
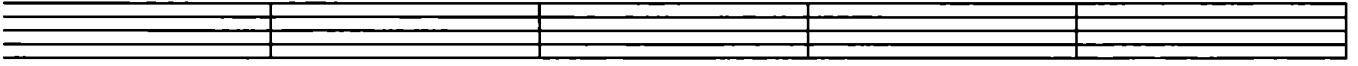
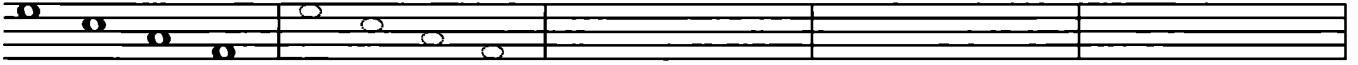
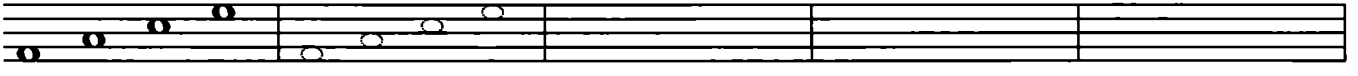


# Ноты между линейками



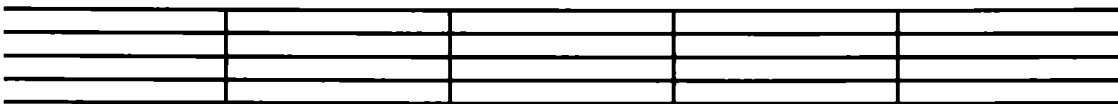
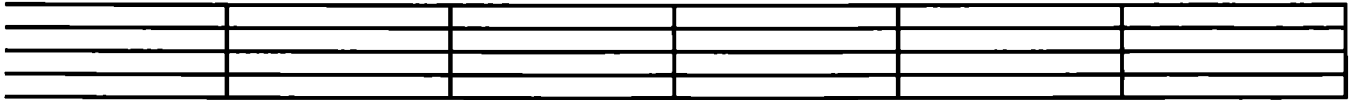
# Ноты на линейках



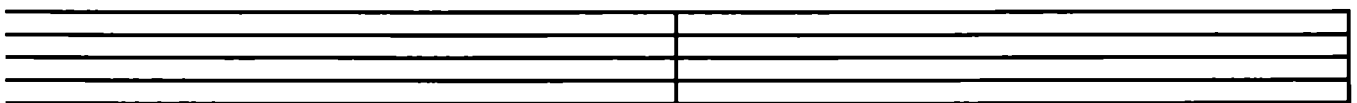
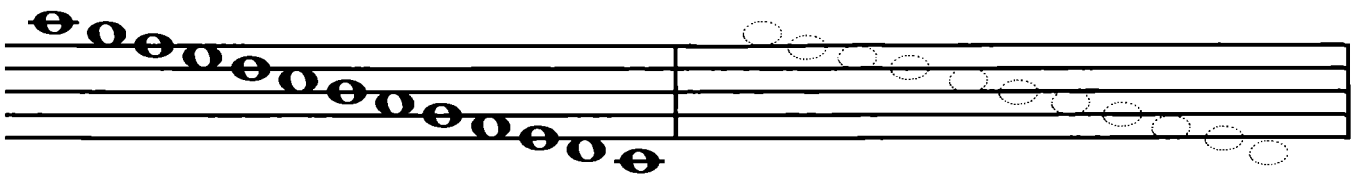
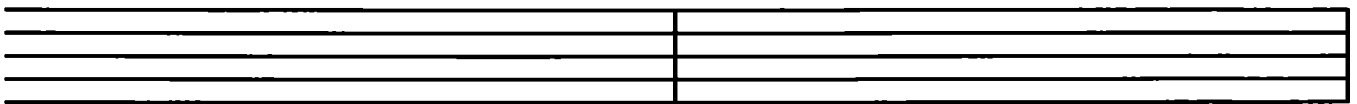
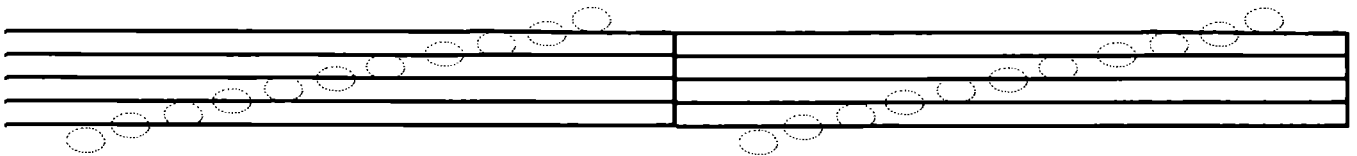


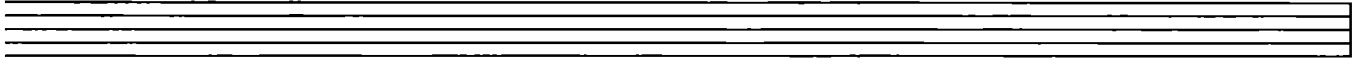
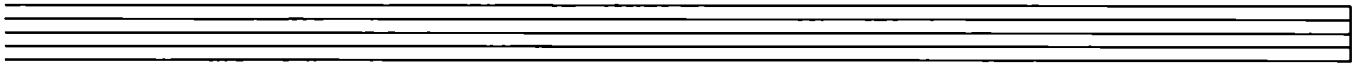
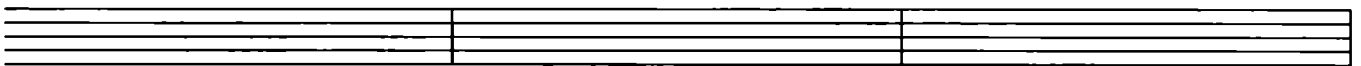
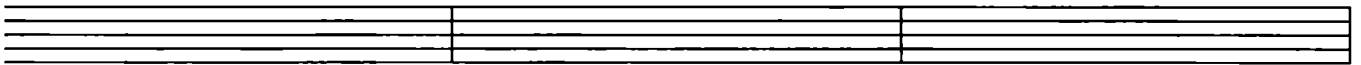
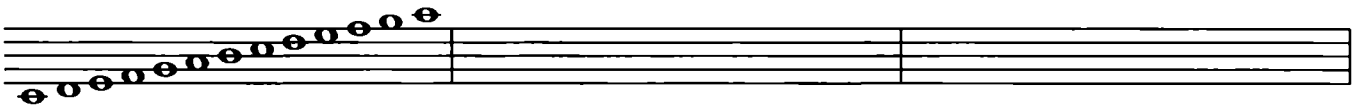
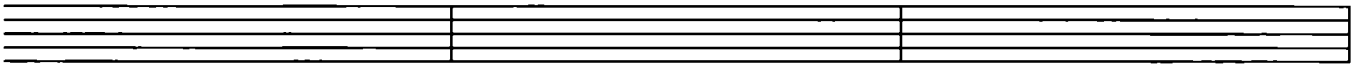
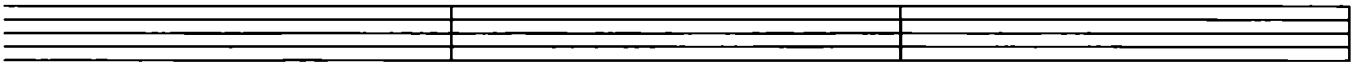
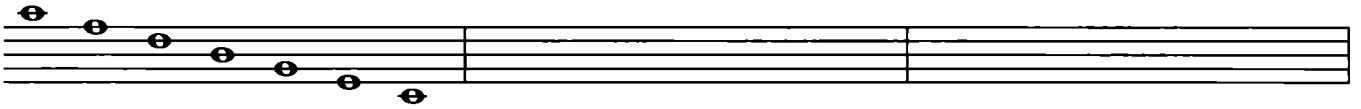
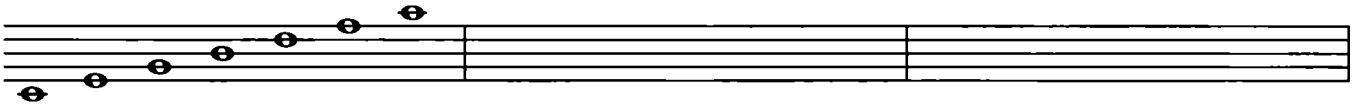


# Ноты на добавочной линейке



# Звукоряд – звуки подряд



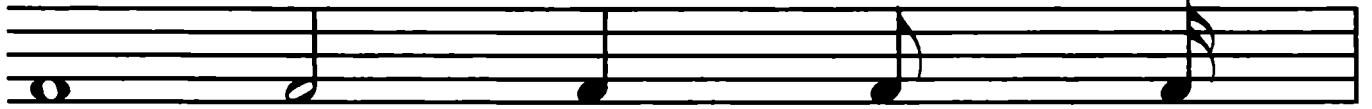


# Длительности



Половинная

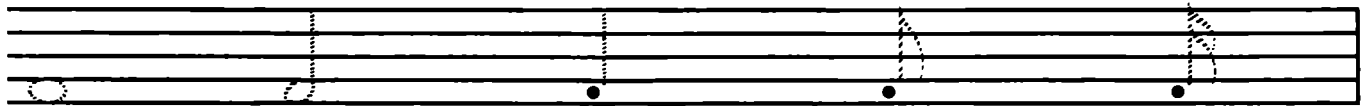
Восьмая



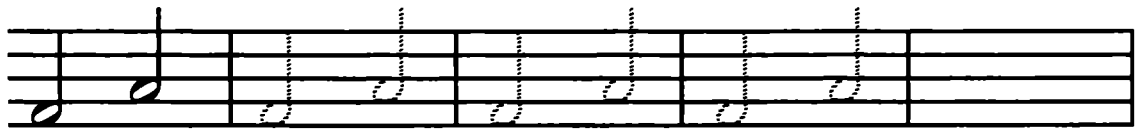
Целая

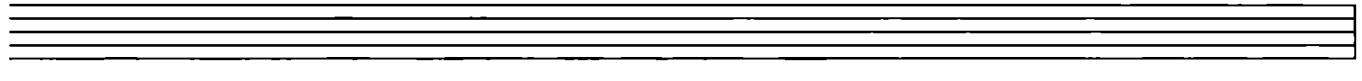
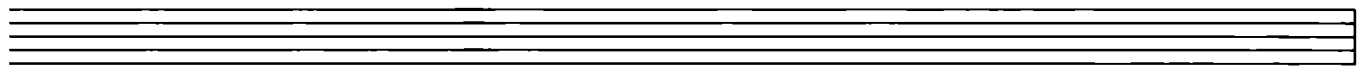
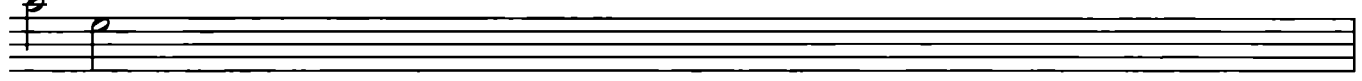
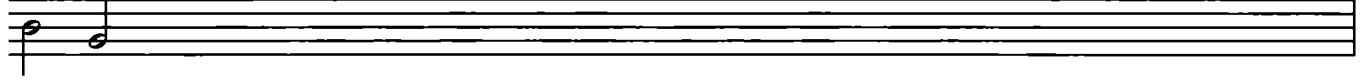
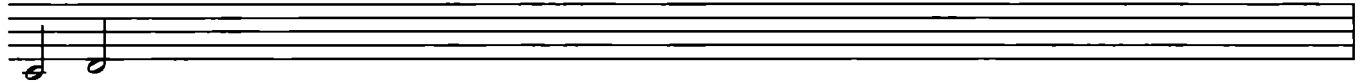
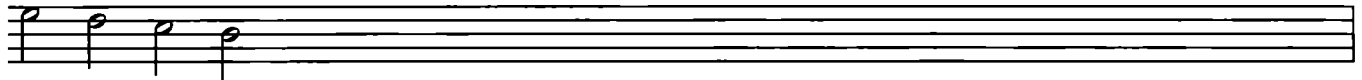
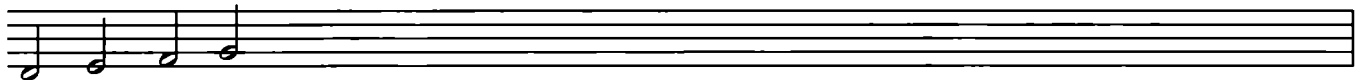
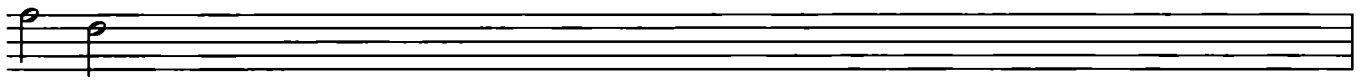
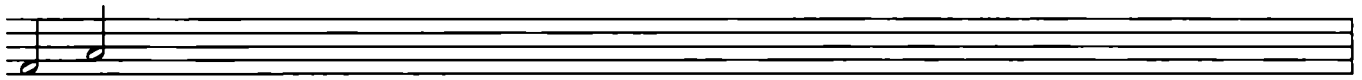
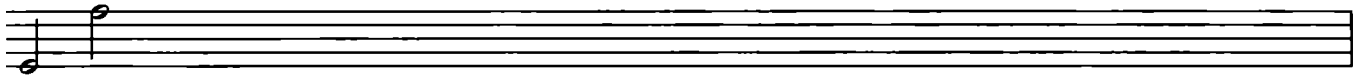
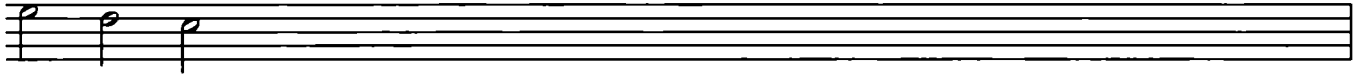
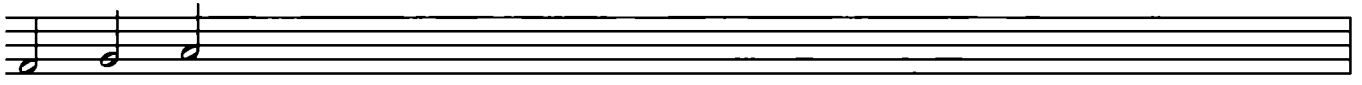
Четверть

Шестнадцатая



# Половинные

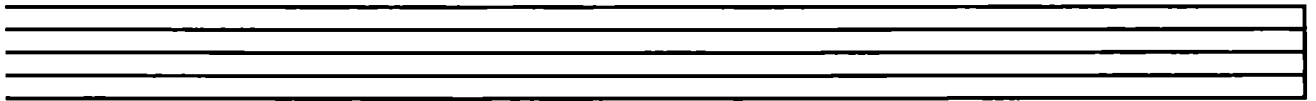
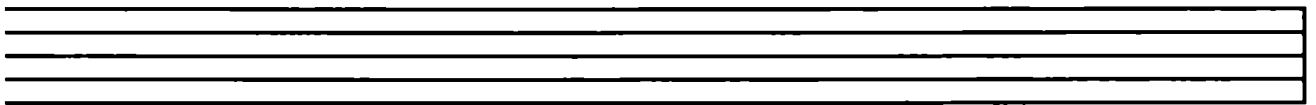
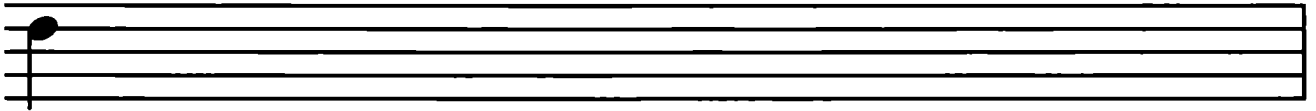
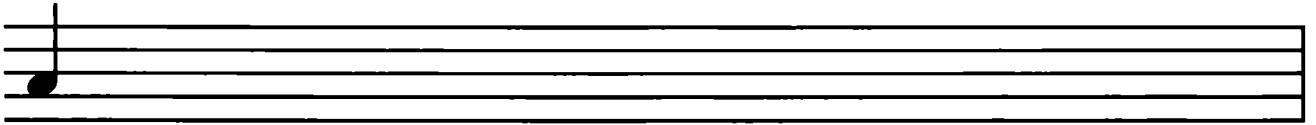






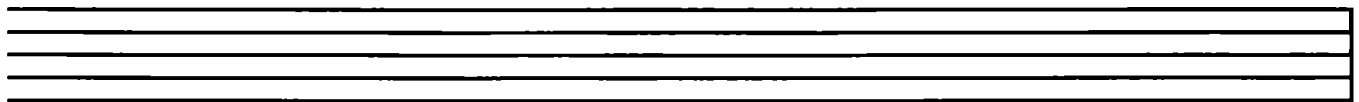
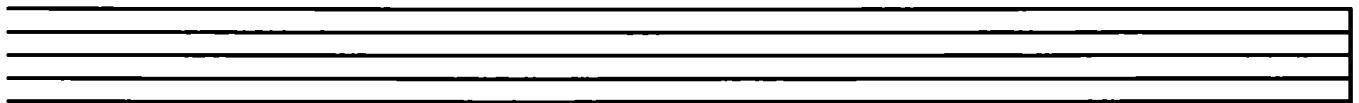
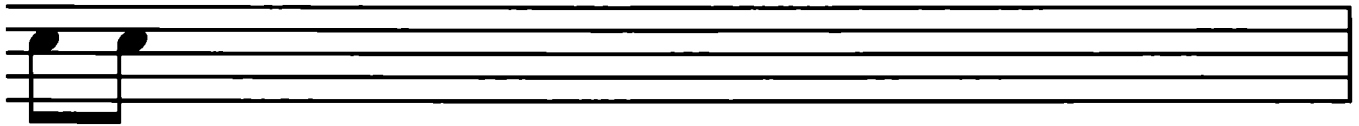
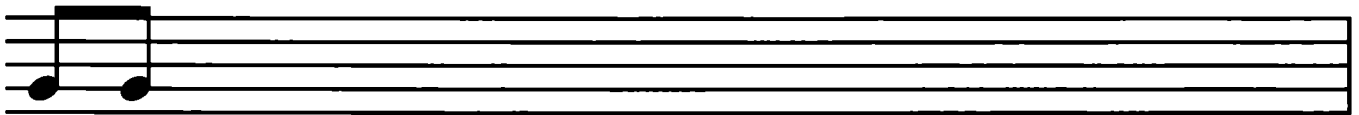
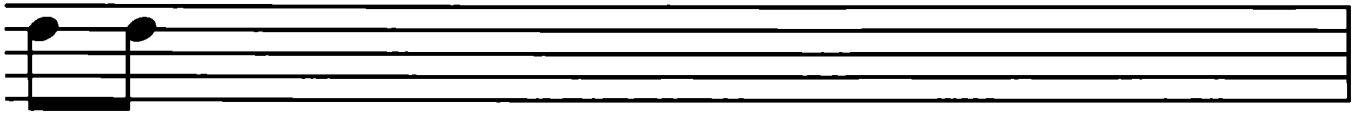
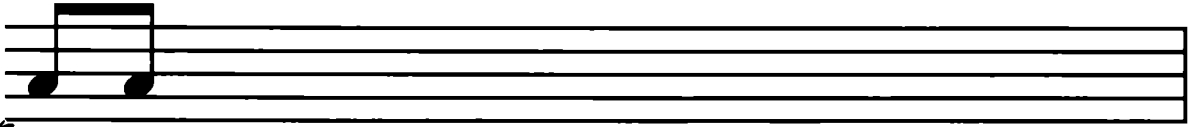


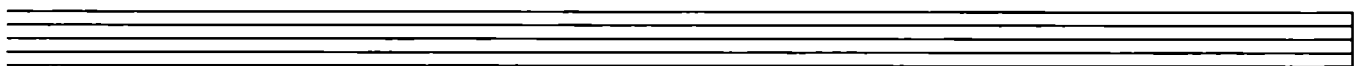
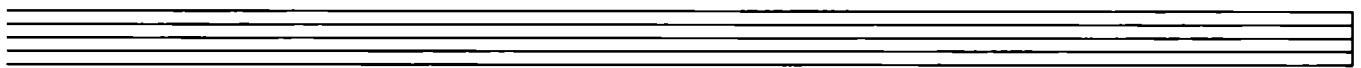
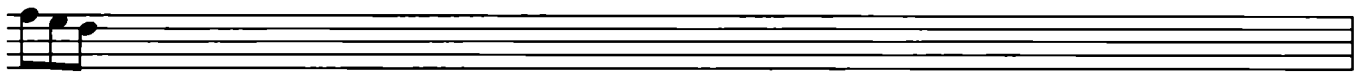
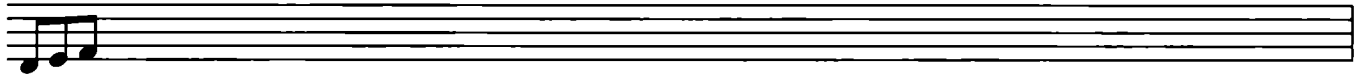
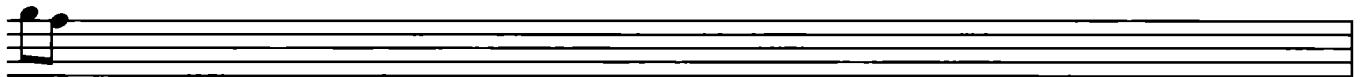
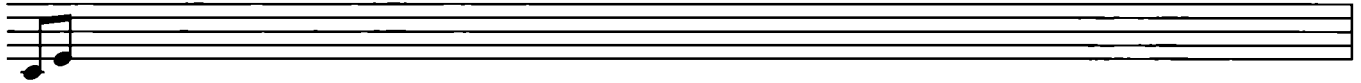
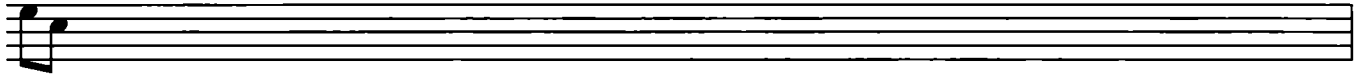
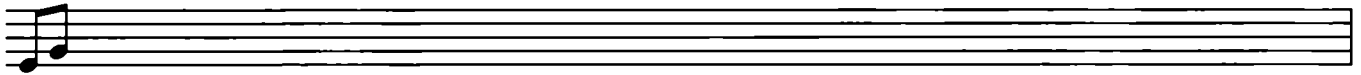
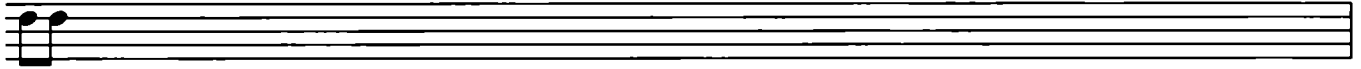
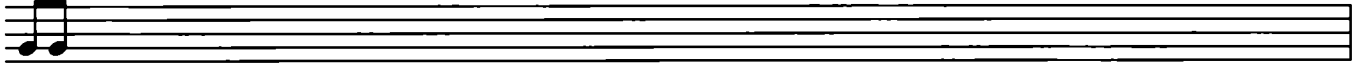
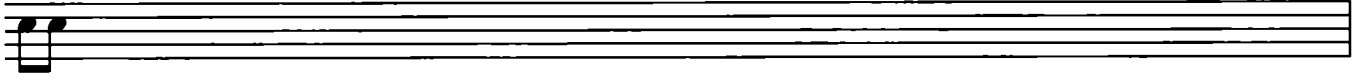
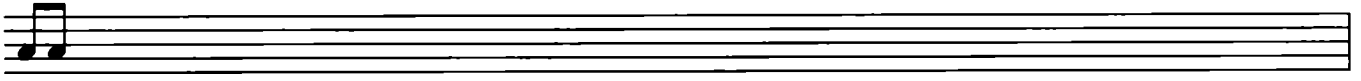
# Четверти

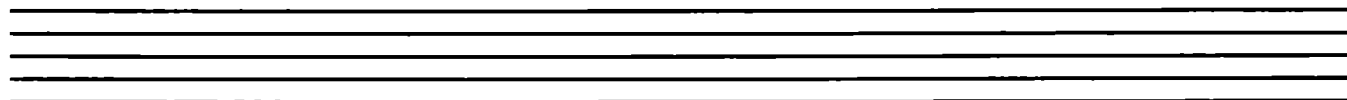
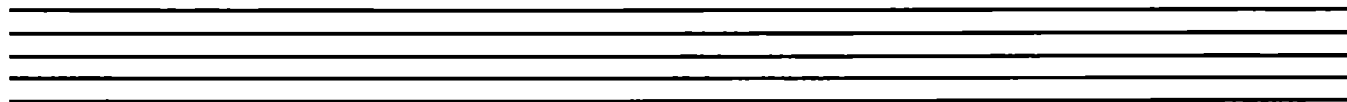
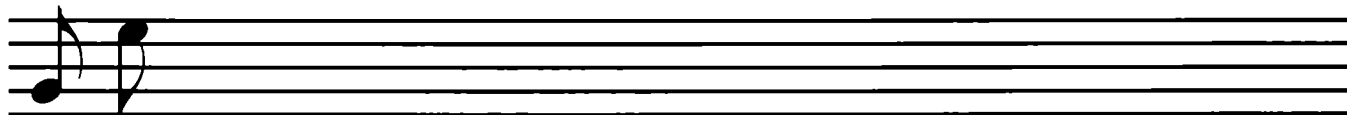
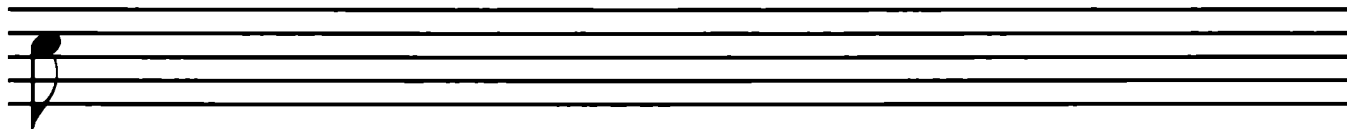
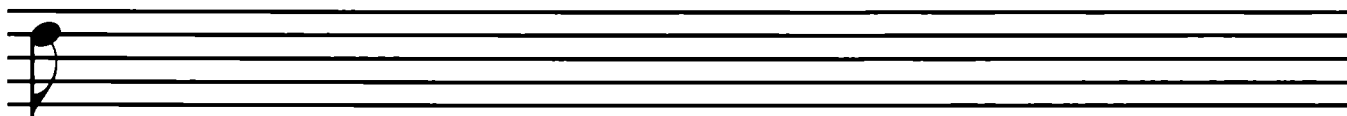


This page contains 12 musical staves. The first 10 staves each begin with a single quarter note on the first line of the staff. The 11th staff begins with two quarter notes: one on the first line and one on the second line. The 12th staff begins with two quarter notes: one on the first line and one on the second line. The remaining staves are empty.

# Восьмые

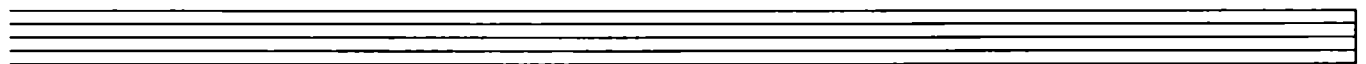
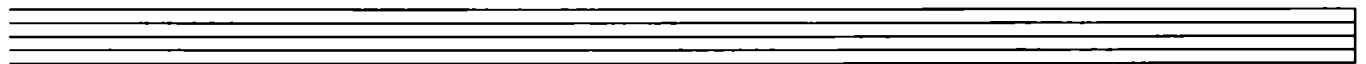
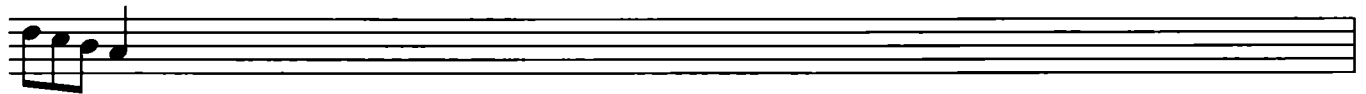
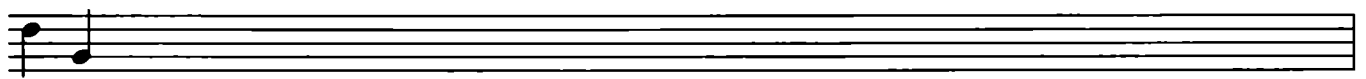
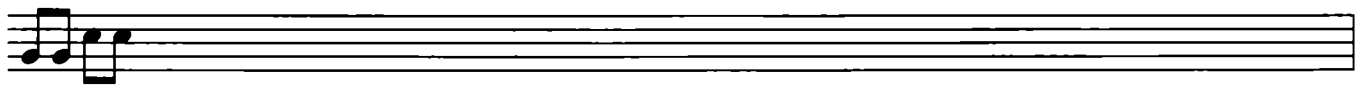
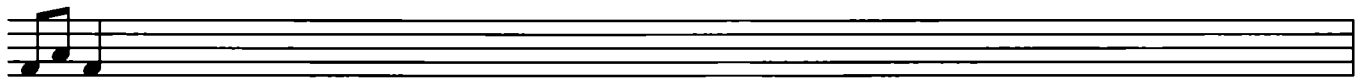
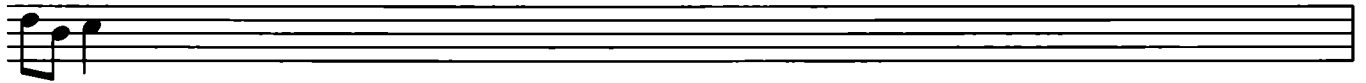
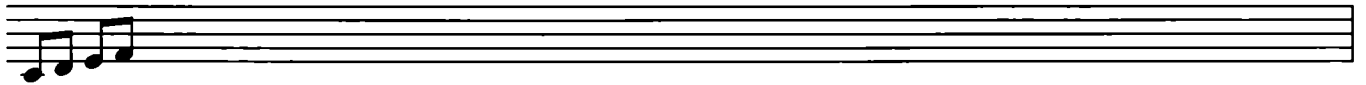
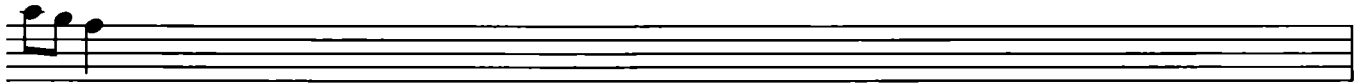
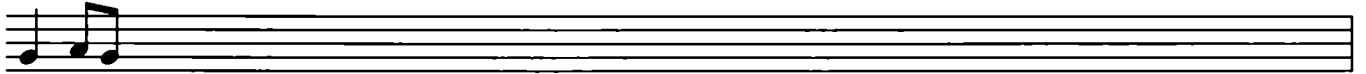
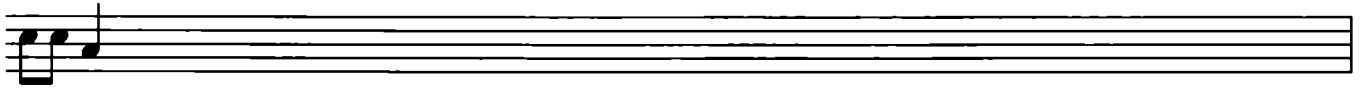
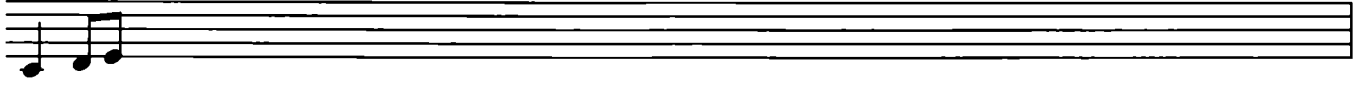


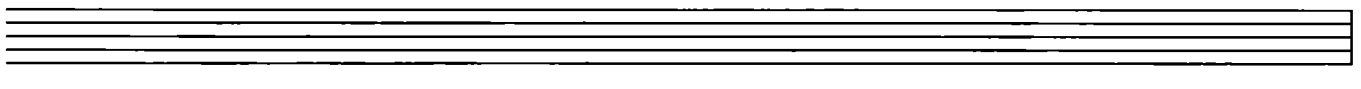
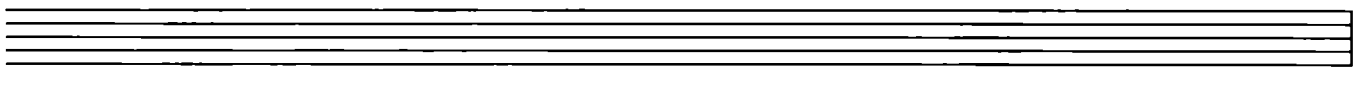
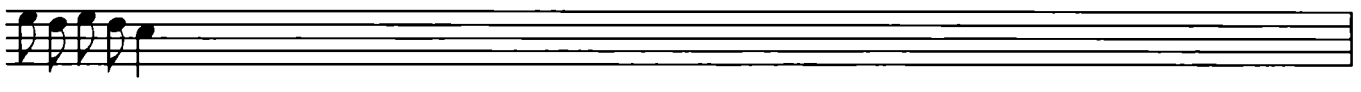
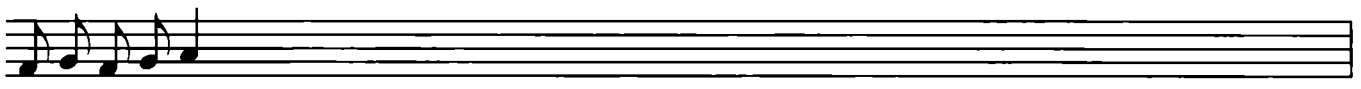
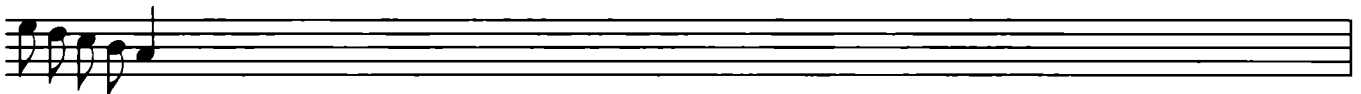
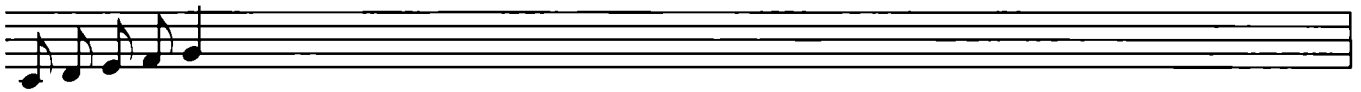
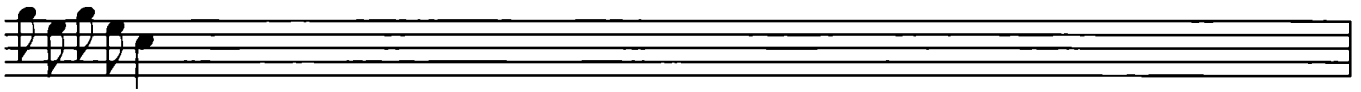
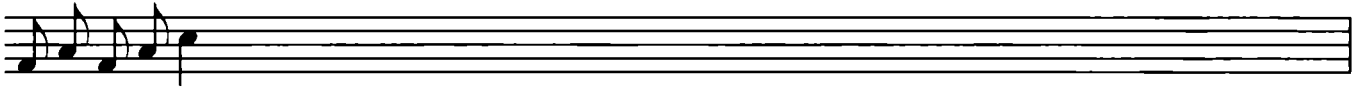
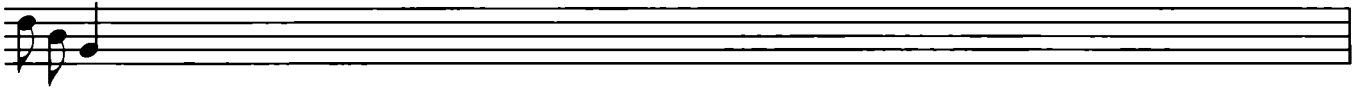
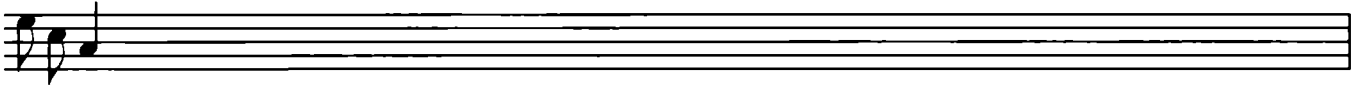
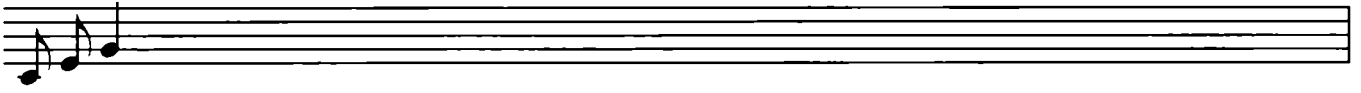
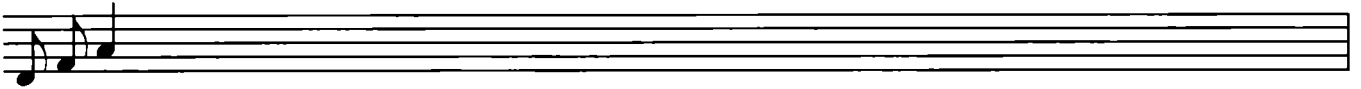




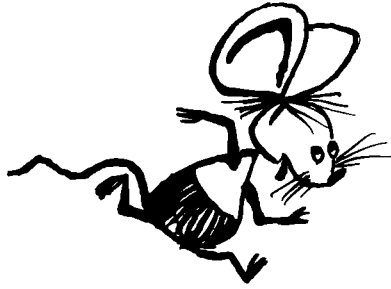
This page contains 13 musical staves. The notation is as follows:

- Staff 1: A single eighth note on the first line.
- Staff 2: A single eighth note on the first line.
- Staff 3: A single eighth note on the first line.
- Staff 4: A single eighth note on the first line.
- Staff 5: A single eighth note on the first line.
- Staff 6: A single eighth note on the first line.
- Staff 7: A single eighth note on the first line.
- Staff 8: A pair of eighth notes on the first line.
- Staff 9: A pair of eighth notes on the first line.
- Staff 10: A pair of eighth notes on the first line.
- Staff 11: An empty staff.
- Staff 12: An empty staff.
- Staff 13: An empty staff.

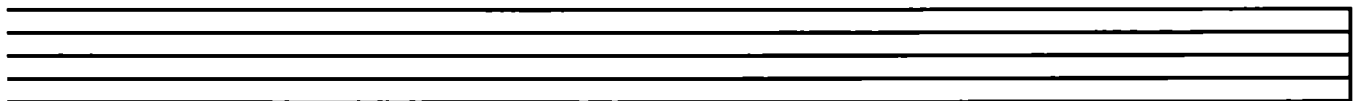
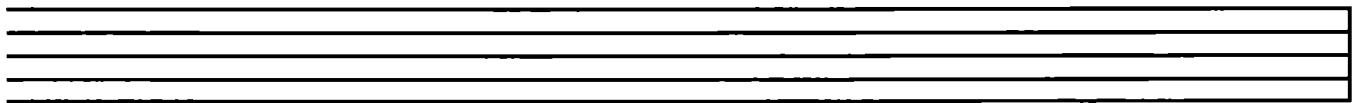
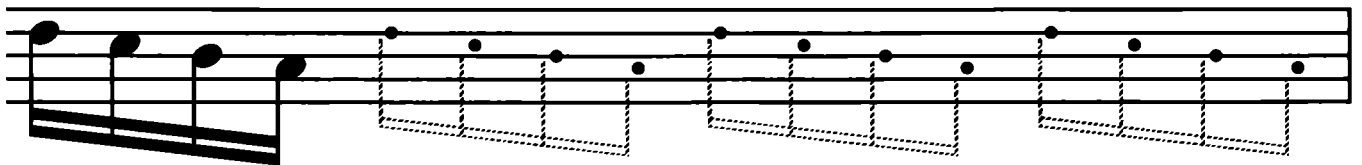
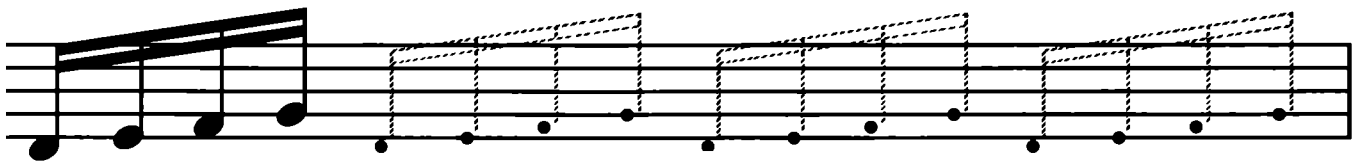


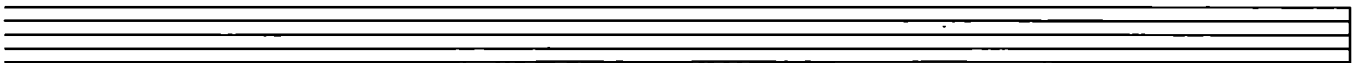
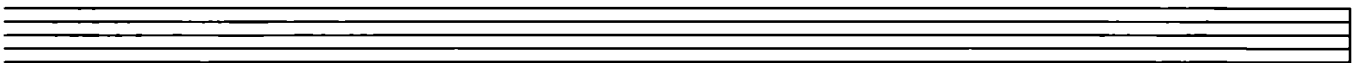
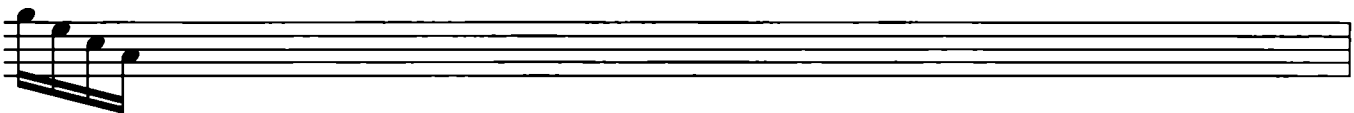
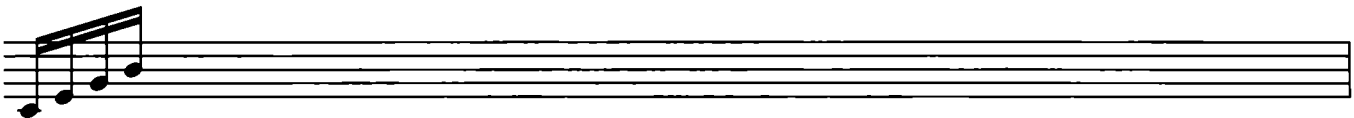
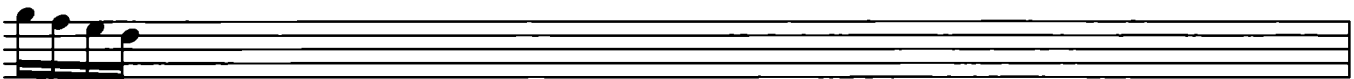
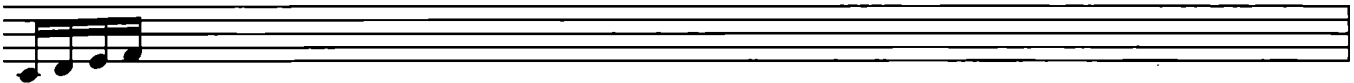
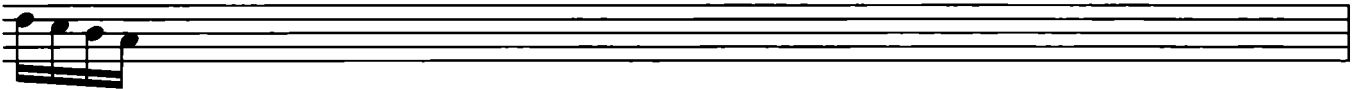
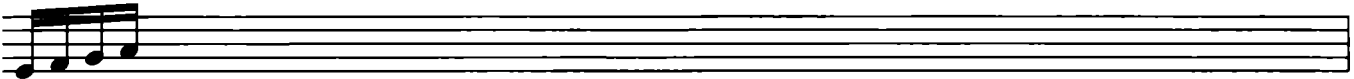
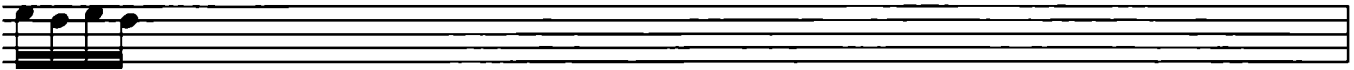
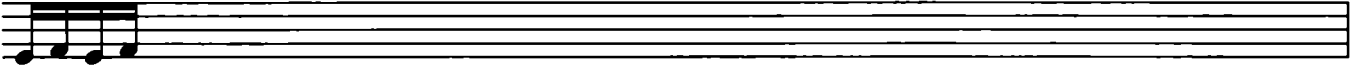
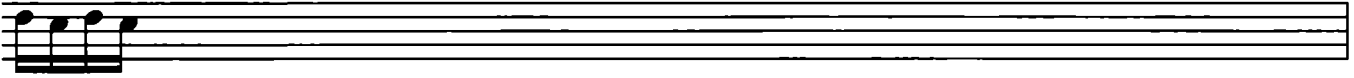
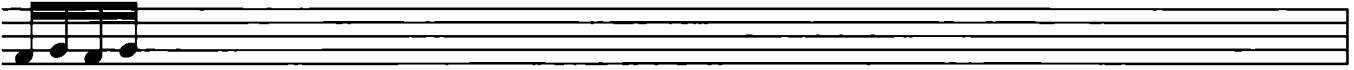




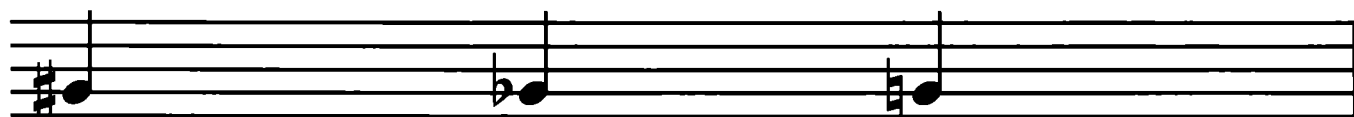


# Шестнадцатые





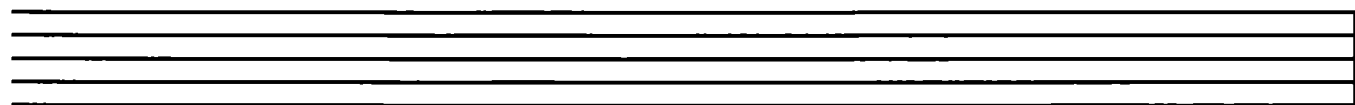
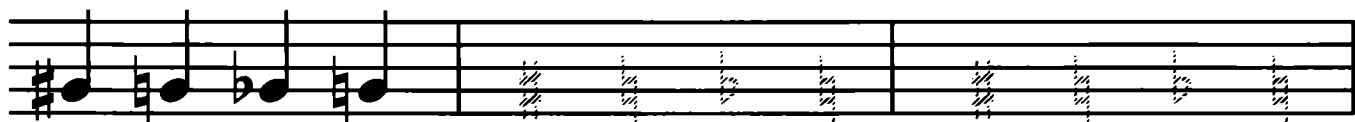
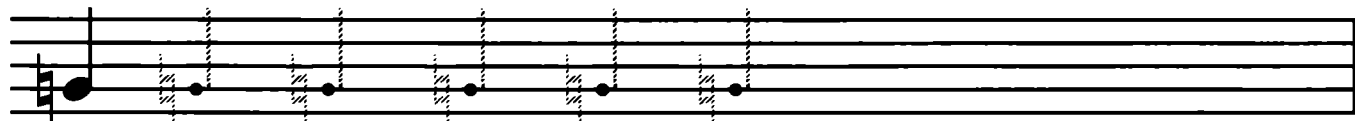
# Знаки альтерації

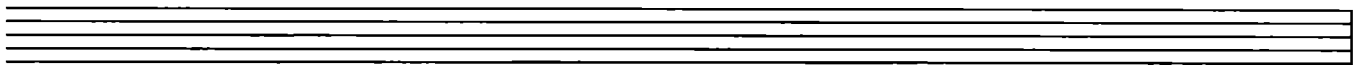
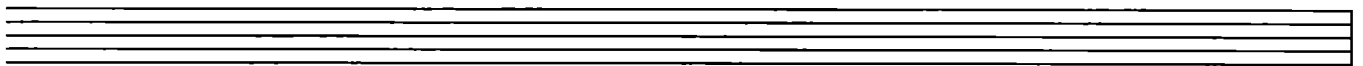
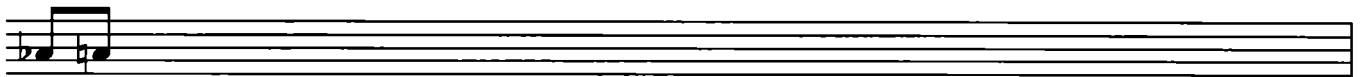
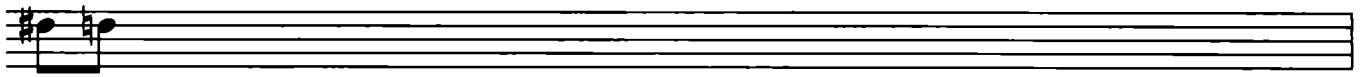
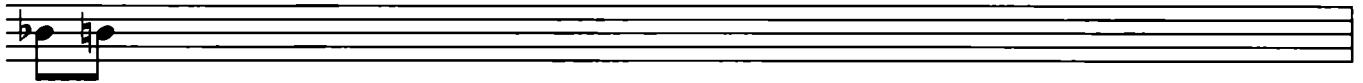
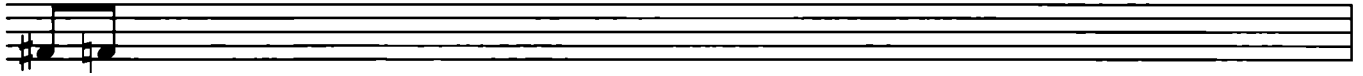
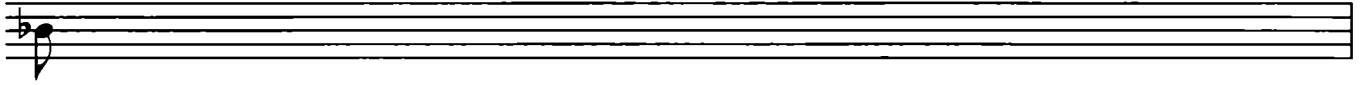
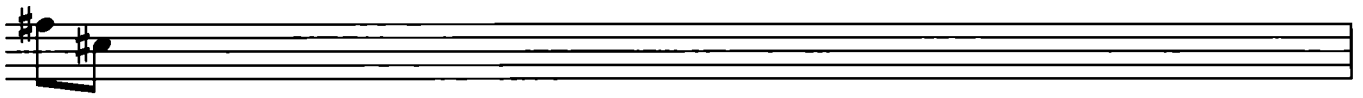
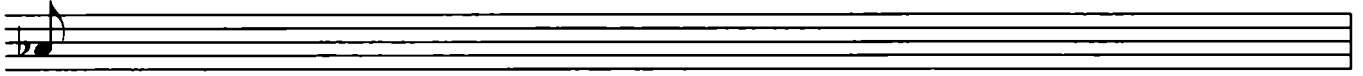
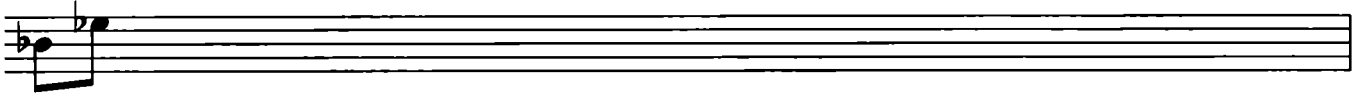
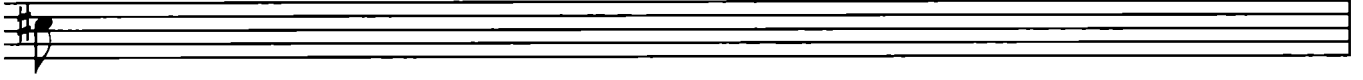
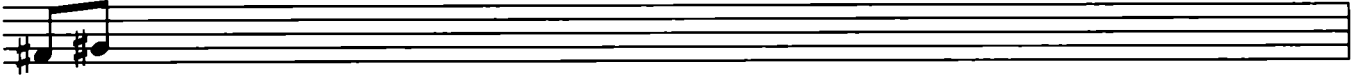


диез

бемоль

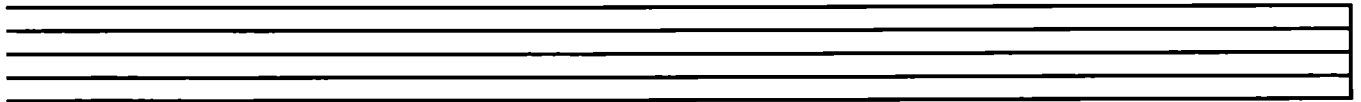
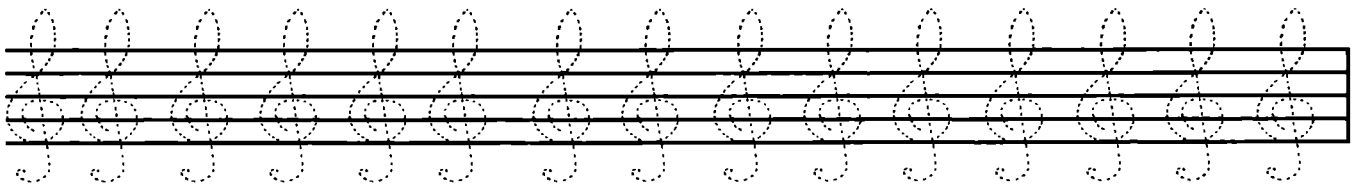
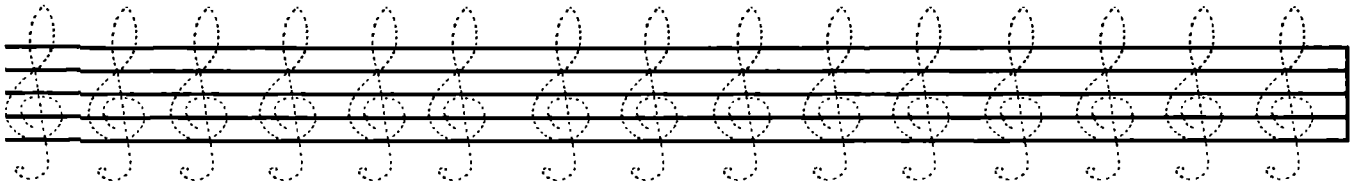
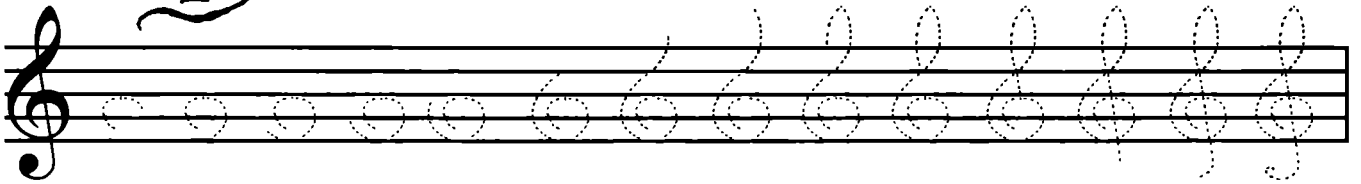
бекар



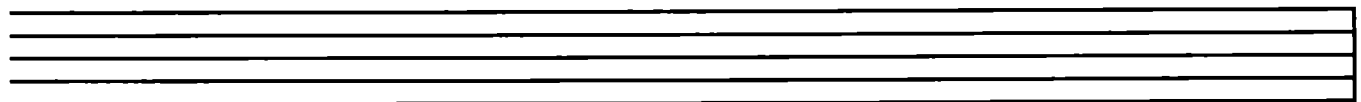
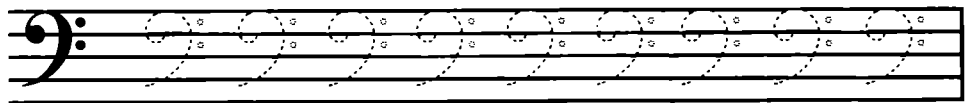


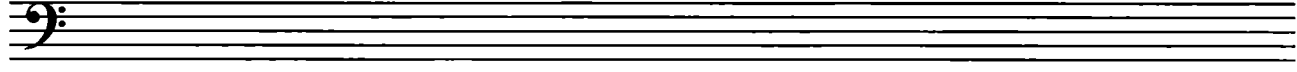
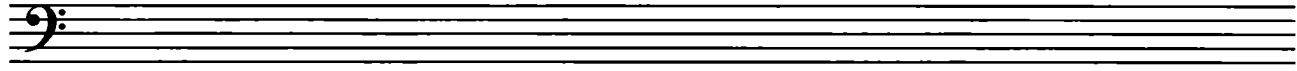
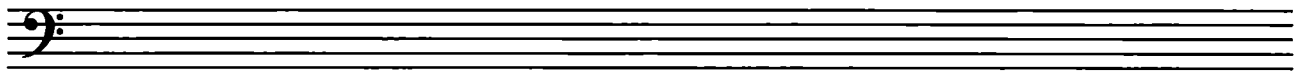
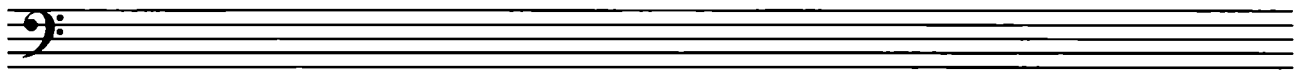
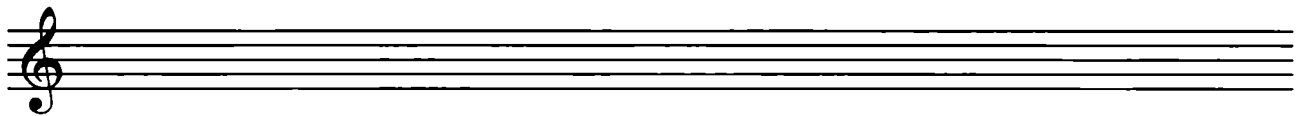
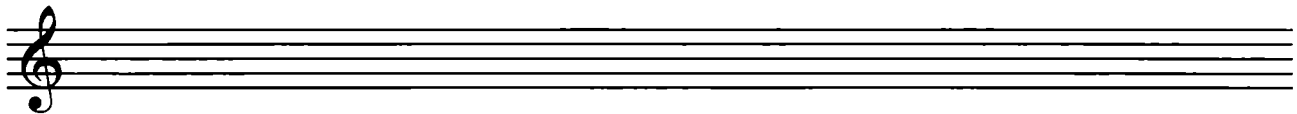
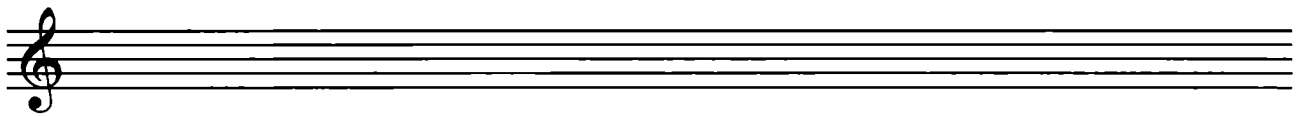
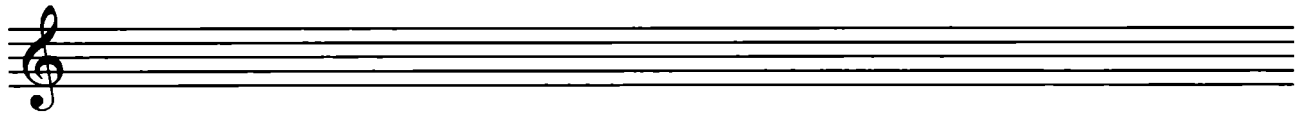


## Скрипичный ключ



## Басовый ключ



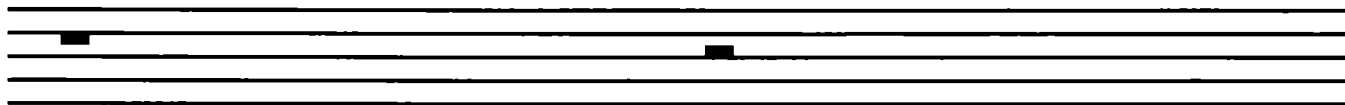




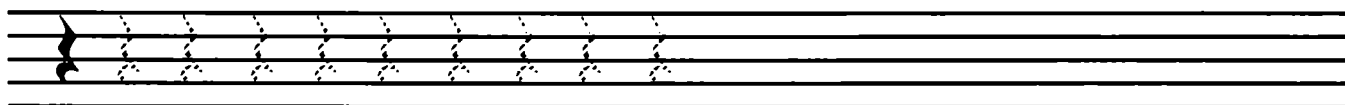
# Паузы

Целая

Половинная



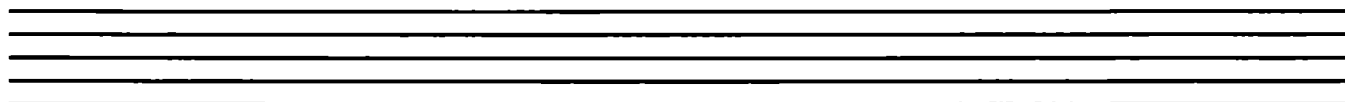
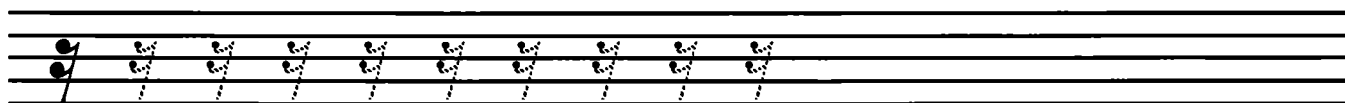
Четвертная



Восьмая



Шестнадцатая



This page contains 13 musical staves. The first three staves have musical notation: the first staff has a treble clef and a quarter note on the first line; the second staff has a treble clef and a quarter note on the first line; the third staff has a treble clef and a quarter note on the first line. The remaining ten staves are empty.



**НОТНЫЕ ПРОПИСИ**

**для начинающих**

*Составитель Абросова Ольга Валерьевна*

Редактор *С. Котомина*  
Худож. редактор *С. Калинин*  
Техн. редактор *О. Путилина*

ИБ № 5626

Подписано в печать 26.08.12. Формат 60х90 1/8. Бумага офсетная.  
Гарнитура «Таймс». Объем печ. л. 3,0. Тираж 1000 экз. Изд. № 16662. Зак. № К-12527.

ОАО «Издательство «Музыка», 123001, Москва, Большая Садовая, д.2/46  
Тел.: (499) 503-7737. Тел./факс: (499) 254-6598  
[www.musica.ru](http://www.musica.ru)

ISMN 979-0-706373-19-5

Отпечатано в ГУП ЧР «ИПК «Чувашия»  
Мининформполитики Чувашии,  
428019, г. Чебоксары, пр. И.Яковлева, 13.

